

# ***PONDICHERRY ENGINEERING COLLEGE***

(Established and funded by the Government of Puducherry)  
PILLAICHAVADY, PUDUCHERRY – 605 014

## **MANDATORY DISCLOSURE**

( *Engineering & Technology* )



Submitted to

## ***All India Council for Technical Education***

INDIRA GANDHI SPORTS COMPLEX, INDRAPRASTHA ESTATE NEW DELHI- 110 002

PHONE: 23392563/64/65/68/71/73/74/75

FAX: 011-23392554

Web site: [www.aicte.ernet.in](http://www.aicte.ernet.in)

# 16

## MANDATORY DISCLOSURE

Mandatory Disclosure by Institutions running AICTE approved **Engineering/Technology/Pharmacy** programmes to be included in their respective Information Brochure, displayed on their website and to be submitted to AICTE every year together with its URL

The following information is to be given in the Information Brochure besides being hosted on the Institution's official Website.

*"The information has been provided by the concerned institution and the onus of authenticity lies with the institution and not on AICTE."*

### I. NAME OF THE INSTITUTION

|                     |   |  |  |
|---------------------|---|--|--|
| Name                | PONDICHERRY ENGINEERING COLLEGE                     |  |  |
| Address             | Permanent Location as approved by AICTE             | Temporary Location (if applicable)                               |  |
| Village             | PILLAICHAVADY                                       |  |  |
| Taluk               | PUDUCHERRY  |  |  |
| District            | PUDUCHERRY  |  |  |
| PIN                 | 605 014   |  |  |
| State               | PUDUCHERRY  |  |  |
| STD Code            | 0413  | Phone No: 2655281 to 2655287                                     |  |
| Fax No.             | 0413-2655 101                                       | E-Mail: <a href="mailto:principal@pec.edu">principal@pec.edu</a> |  |
| Web site            | <a href="http://www.pec.edu">http://www.pec.edu</a> |  |  |
| Nearest Rly Station | PUDUCHERRY  | Distance 14 kms  |  |
| Nearest Airport     | CHENNAI   | Distance 180 kms   |  |

**II. NAME & ADDRESS OF THE DIRECTOR**

|             |  |  |                |                                      |                  |
|-------------|--|--|----------------|--------------------------------------|------------------|
| Name        | <b>DR.V.PRITHVIRAJ</b>                                   |  |                |                                      |                  |
| Designation | PRINCIPAL  | Qualification & Experience<br>B.E., D.S.Sc.,<br>M.Sc(Engg), Ph.D | Highest Degree | Specialization                       | Total Experience |
|             |  |  | Ph.D           | Broadband and Wireless Communication | 33 years         |
| STD Code    | 0413   | Phone No. (O) - 2655214  | Fax No.        | 2655101                              |                  |
| STD Code    |  | Phone No. (R) - 2211717  | <b>Fax No.</b> | -                                    |                  |
| E-Mail      | <a href="mailto:Principal@pec.edu">Principal@pec.edu</a> |  | Mobile No.     |                                      |                  |

**III. NAME OF THE AFFILIATING UNIVERSITY**

|         |   |                       |  |
|---------|---|-----------------------|--|
| Name    | <b>PONDICHERRY UNIVERSITY</b>                   |                       |  |
| Address | R.V. NAGAR,<br>KALAPET,<br>PUDUCHERRY – 605 014 |                       |  |
| PinCode | <b>605 014</b>                                  | Period of Affiliation | <b>UPTO 2009</b>   |
| STDCode | <b>0413</b>                                     | Phone No.             | <b>2655991</b>   |
| Fax No. | <b>2655265</b>                                  | E-Mail                | <a href="mailto:Bio//pu@pondiuni.ren.nic.in">Bio//pu@pondiuni.ren.nic.in</a> |

#### IV. GOVERNANCE

##### ✓ Members of the Board and their brief background

|   |                 |
|---|-----------------|
| <b>Chief Secretary<br/>Government of Puducherry<br/>Puducherry</b>  | <b>Chairman</b> |
| <b>Secretary to Government (Education)<br/>Government of Puducherry<br/>Puducherry</b>                            | <b>Member</b>   |
| <b>Secretary to Government (Finance)<br/>Government of Puducherry<br/>Puducherry</b>                              | <b>Member</b>   |
| <b>Secretary to Lt. Governor<br/>Government of Puducherry<br/>Puducherry</b>                                      | <b>Member</b>   |
| <b>The Director<br/>Directorate of Higher and Technical Education<br/>Government of Puducherry<br/>Puducherry</b> | <b>Member</b>   |
| <b>The Director<br/>Directorate of School Education<br/>Government of Puducherry<br/>Puducherry</b>               | <b>Member</b>   |
| <b>One Industrialist from Puducherry<br/>Puducherry</b>   | <b>Member</b>   |
| <b>One Industrialist / Eminent Social Worker from<br/>Karaikal region.</b>  | <b>Member</b>   |
| <b>Nominee of the Vice – Chancellor of<br/>Pondicherry University</b>   | <b>Member</b>   |

**The Director  
Southern Regional Office  
All India Council for Technical Education  
Chennai**

**Member**

**The Director  
Indian Institute of Technology  
Chennai**

**Member**

**Dr.K.Manivannan  
Professor, EEE  
Pondicherry Engineering College  
Puducherry**

**Member**

**Dr.R.Sekar  
Asst. Professor, Maths  
Pondicherry Engineering College  
Puducherry**

**Member**

**Prof.V.Prithviraj  
Principal  
Pondicherry Engineering College  
Puducherry**

**Member Secretary**

**✓ Members of Academic Advisory Body**

|  |                    |
|--|--------------------|
| Secretary to Govt. (Education)             | - Chairman         |
| Secretary to Lt. Governor                  | - Member           |
| Director of School Education               | - Member           |
| Director of Higher & Tech. Education       | - Member           |
| Director, AICTE, SRO, Chennai              | - Member           |
| One nominee from Pondicherry University    | - Member           |
| One Industrialist                          | - Member           |
| One faculty from PEC nominated by Chairman | - Member           |
| Principal, PEC                             | - Member Secretary |

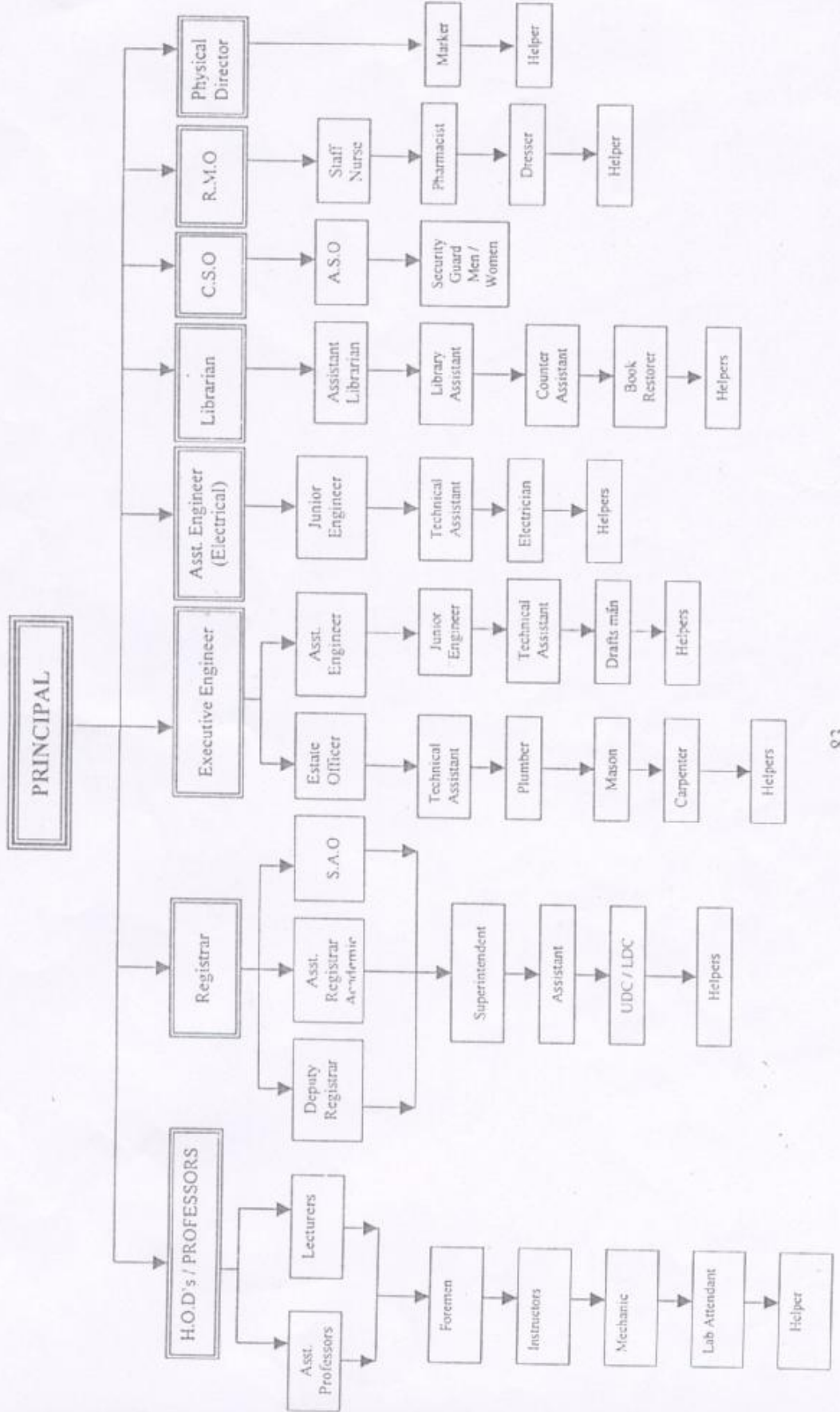
**✓ Frequency of the Board Meetings and Academic Advisory Body  
Once or twice in a year Or As and when felt necessary.**

**✓ Organizational chart and processes**

ANNEXURE I(b)

ORGANIZATIONAL CHART

ADMINISTRATIVE SET-UP OF PONDICHERRY ENGINEERING COLLEGE



✓ **Nature and Extent of involvement of faculty and students in academic affairs/ improvements**

- Two senior faculty members are the members of Governing Board
- The important decisions at the college level are taken at college council in which all heads of the departments are members
- Choice based Credit System Meetings are conducted three times in a semester. Two students from each class and the faculty participate in the meetings.
- Student Council actively participates in all activities

✓ **Mechanism/Norms & Procedure for democratic/good Governance**

- The HODs and sections heads have to write confidential report. The confidential reports plays vital role in promotion.
- The important decisions are taken at Staff meeting, College council after discussion.

✓ **Student Feedback on Institutional Governance/faculty performance**

- The feedback from students are obtained and used for evaluation of teachers.
- Choice based Credit System Meetings are conducted three times in a semester. Two students from each class and the faculty participate in the meetings and give their feedback on faculty and other academic activities.

✓ **Grievance redressal mechanism for faculty, staff and students**

The Chairman Governing Body is the Appellate Authority for Disciplinary matter for faculty and Students. Students Welfare and Disciplinary Action Committee also constituted for the welfare and disciplinary matters of the students.

- Each class has faculty advisor. The students meet faculty advisors regarding their grievances.
- Periodic staff meeting is conducted at department and at college level.

## V PROGRAMMES

- ✓ Name of the Programmes approved by the AICTE
- ✓ Name of the Programmes accredited by the AICTE
- ✓ For each Programme the following details are to be given:
  - Name
  - Number of seats
  - Duration

|               | Courses      | Sanctioned Intake | Duration (Years) | Status of Accreditation (Validity period)                                   |
|---------------|--------------|-------------------|------------------|---|
| <b>B.Tech</b> | CE           | 60                | 4                | 3 years from 16.3.2007  |
|               | ME           | 60                | 4                | 3 years from 29.3.2007  |
|               | ECE          | 60                | 4                | 5 years from 29.3.2007  |
|               | CSE          | 60                | 4                | 3 years from 29.3.2007  |
|               | EEE          | 60                | 4                | 3 years from 29.3.2007  |
|               | CHE          | 30                | 4                | 3 years from 29.3.2007  |
|               | E&IE         | 60                | 4                | 3 years from 29.3.2007  |
|               | IT           | 60                | 4                | 3 years from 29.3.2007  |
| <b>M.Tech</b> |              |                   |                  |   |
| PG(FT)        | CE ACT       | 17                | 2                | Not applied   |
|               | CE EE        | 18                | 2                |   |
|               | ME ET        | 17                | 2                | Not Accredited  |
|               | ECE ECE      | 17                | 2                |   |
|               | CSE DCS      | 25                | 2                | Not applied as the courses were started during the academic year 2003-2004. |
|               | EEE EDC      | 25                | 2                |   |
|               | ME – PDM     | 18                | 2                | Not applied as the courses were started during the academic year 2006-2007  |
|               | ECE – WC     | 18                | 2                |   |
|               | CSE - IS     | 18                | 2                |   |
|               | MCA          | 30                | 3                |   |
|               | <b>Total</b> | <b>653</b>        |                  |   |

- Fee Given at Col. VII
- Placement Facilities
- Campus placement in last three years with minimum salary, maximum salary and average salary

| Year | Discipline | Total no. of students passed out for<br>(last 3 years) | Total no. of students placed through placement cell<br>(last 3 years) |
|------|------------|--|---|
|------|------------|--|---|

|         |                      |            |            |
|---------|----------------------|------------|------------|
| 2005-06 | <b>UG COURSES</b>    |            |            |
|         | B.Tech CIVIL         | 50         | 6          |
|         | B.Tech MECH          | 50         | 36         |
|         | B.Tech CSE           | 58         | 49         |
|         | B.Tech EIE           | 23         | 16         |
|         | B.Tech ECE           | 58         | 53         |
|         | B.Tech EEE           | 62         | 52         |
|         | B.Tech IT            | 58         | 46         |
|         | B.Tech CHE           | 33         | 23         |
|         | <b>PG COURSES</b>    |            |            |
|         | M.Tech - CSE         | 25         | 15         |
|         | M.Tech - ECE         | 17         | 7          |
|         | M.Tech - ET          | 16         | 1          |
|         | M.Tech Civil (ACT)   | 17         | 3          |
|         | M.Tech Civil (Envrn) | 16         | 6          |
|         | M.Tech - EEE         | 22         | 6          |
|         | MCA                  | 30         | 19         |
|         | <b>TOTAL PLACED</b>  | <b>535</b> | <b>338</b> |

|                     |                      |            |    |
|---------------------|----------------------|------------|----|
| 2006-07             | <b>UG COURSES</b>    |            |    |
|                     | B.Tech CIVIL         | 49         | 45 |
|                     | B.Tech MECH          | 47         | 44 |
|                     | B.Tech CSE           | 63         | 55 |
|                     | B.Tech EIE           | 24         | 23 |
|                     | B.Tech ECE           | 60         | 53 |
|                     | B.Tech EEE           | 57         | 47 |
|                     | B.Tech IT            | 56         | 51 |
|                     | B.Tech CHE           | 33         | 12 |
|                     | <b>PG COURSES</b>    |            |    |
|                     | M.Tech - CSE         | 22         | 16 |
|                     | M.Tech - ECE         | 15         | 8  |
|                     | M.Tech - ET          | 13         | 4  |
|                     | M.Tech Civil (ACT)   | 8          | 4  |
|                     | M.Tech Civil (Envrn) | 11         | 6  |
|                     | M.Tech - EEE         | 24         | 11 |
|                     | MCA                  | 30         | 24 |
| <b>TOTAL PLACED</b> | <b>512</b>           | <b>403</b> |    |

|         |                   |    |    |
|---------|-------------------|----|----|
| 2007-08 | <b>UG COURSES</b> |    |    |
|         | B.Tech CIVIL      | 62 | 53 |
|         | B.Tech MECH       | 62 | 56 |
|         | B.Tech ECE        | 66 | 55 |
|         | B.Tech CSE        | 66 | 56 |
|         | B.Tech EEE        | 66 | 55 |
|         | B.Tech EIE        | 33 | 27 |
|         | B.Tech CHE        | 32 | 22 |

|  |                     |            |            |
|--|---------------------|------------|------------|
|  | B.Tech IT           | 66         | 54         |
|  | <b>PG COURSES</b>   |            |            |
|  | M.Tech - DCS        | 24         | 13         |
|  | M.Tech - ECE        | 16         | 7          |
|  | M.Tech - EE         | 10         | 4          |
|  | M.Tech - EDC        | 25         | 14         |
|  | M.Tech - IS         | 18         | 7          |
|  | M.Tech – WC         | 17         | 6          |
|  | M.Tech – PDM        | 7          | 7          |
|  | M.Tech – ACT        | 8          | 3          |
|  | MCA                 | 30         | 18         |
|  | <b>TOTAL PLACED</b> | <b>542</b> | <b>453</b> |

**Details of companies/Industries visiting the institute for placement since the last three years.**

|    |         |                                      |     |
|----|---------|--------------------------------------|-----|
| 1  | 2005-06 | TATA Consultancy Services (TCS)      | 117 |
| 2  |         | Infosys                              | 28  |
| 3  |         | Cognizant Technology Solutions (CTS) | 55  |
| 4  |         | HCL Technologies                     | 26  |
| 5  |         | Caritor                              | 9   |
| 6  |         | L&T Infotech                         | 1   |
| 7  |         | Birlasoft                            | 3   |
| 8  |         | American Megatrends                  | 2   |
| 9  |         | Geomatic Software Solutions          | 5   |
| 10 |         | Patni Computer Systems Ltd.          | 11  |
| 11 |         | Sasken Communication Tech. Ltd.      | 1   |
| 13 |         | HP Invent                            | 8   |
| 14 |         | CSC India Pvt Ltd                    | 1   |
| 17 |         | IFlex Solutions                      | 2   |
| 19 |         | Igate Global Solutions               | 3   |
| 20 |         | Cybernet Software Solutions          | 1   |
| 21 |         | V S N L                              | 2   |
| 22 |         | Multitech Software                   | 1   |
| 23 |         | Integra Micro Systems                | 1   |
| 24 |         | Syntel Limited                       | 7   |
| 26 |         | Hindustan Lever Ltd., Mumbai         | 3   |
| 27 |         | Lcube Innovative Solutions           | 1   |
| 28 |         | Vishal Infrastructure                | 20  |
| 29 |         | Progressive Construction Ltd         | 18  |
| 30 |         | Idea Limited                         | 3   |

|    |  |  |   |
|----|--|--|---|
| 31 |  | AIG Software                           | 2 |
| 32 |  | Technip India Limited                  | 1 |
| 33 |  | Grasim Industries Limited              | 2 |
| 34 |  | Tractor & Farm Equipment Ltd<br>(TAFE) | 2 |
| 35 |  | Sobha Developers                       | 2 |

|    |         |                                |     |
|----|---------|--------------------------------|-----|
| 1  | 2006-07 | Tata Consultancy Services      | 124 |
| 2  |         | Cognizant Technologies Limited | 49  |
| 3  |         | Infosys                        | 51  |
| 4  |         | HSBC Global Technology         | 34  |
| 5  |         | HCL Technologies               | 28  |
| 6  |         | Caritor (India) Ltd            | 10  |
| 7  |         | Satyam Computers               | 4   |
| 8  |         | IFles Solutions                | 3   |
| 9  |         | Igate Global Solutions         | 4   |
| 10 |         | Patni Computers                | 20  |
| 11 |         | Birlasoft                      | 1   |
| 12 |         | TVS Motors                     | 2   |
| 13 |         | GCI Solutions                  | 3   |
| 14 |         | L&T (ECC_                      | 12  |
| 15 |         | Sasken Technologies            | 12  |
| 16 |         | SoCrates Software              | 6   |
| 17 |         | TATA Elexi                     | 1   |
| 18 |         | Accenture                      | 4   |
| 19 |         | Gammon India Ltd               | 15  |
| 20 |         | Murugappa Group                | 5   |
| 21 |         | Technip India Ltd.,            | 1   |
| 22 |         | HLL Research Centre            | 1   |
| 23 |         | Verizon Data Services          | 3   |

|    |  |                                |    |
|----|--|--------------------------------|----|
| 24 |  | DCPL                           | 14 |
| 25 |  | CCC                            | 2  |
| 26 |  | FIDELITY                       | 6  |
| 27 |  | ARICENT                        | 8  |
| 28 |  | Nagarjuna Construction Company | 6  |
| 29 |  | MN Dastur                      | 3  |
| 30 |  | Aban Constructions             | 8  |

|    |         |                           |     |
|----|---------|---------------------------|-----|
| 1  | 2007-08 | Tata Consultancy Services | 273 |
| 2  |         | Infosys                   | 16  |
| 3  |         | Wipro Technologies        | 30  |
| 4  |         | Toshiba                   | 6   |
| 5  |         | Patni Computers           | 6   |
| 6  |         | Fidelity                  | 9   |
| 7  |         | L&T (ECC)                 | 24  |
| 8  |         | L&T Infotech              | 6   |
| 9  |         | MN Datur                  | 4   |
| 10 |         | ITC Infotech              | 5   |
| 11 |         | Maytas Infra Ltd          | 15  |
| 12 |         | Cordys R&D Pvt. Ltd.,     | 4   |
| 13 |         | Sapient                   | 1   |
| 14 |         | SCM Microsystem           | 1   |
| 15 |         | Murugaappa Group          | 1   |
| 16 |         | DCPL                      | 7   |
| 17 |         | Mphasis                   | 2   |
| 18 |         | Brigade                   | 1   |
| 19 |         | IDEA Ltd                  | 5   |
| 20 |         | Narendra Plastic Pvt Ltd  | 8   |
| 21 |         | ECCI Limited              | 1   |

|    |                                |    |
|----|--------------------------------|----|
| 22 | EWDPL                          | 4  |
| 23 | VSNL Global Solutions          | 7  |
| 24 | Sai Technology                 | 1  |
| 25 | MRF Ltd                        | 12 |
| 26 | Vishal Infrastructure          | 3  |
| 27 | Cooper Buseman                 | 3  |
| 28 | Denso India Pvt. Ltd.,         | 3  |
| 29 | Shasun Chemicals & Drugs Ltd., | 3  |
| 30 | Mbit Wireless                  | 1  |
| 31 | Radiant Software               | 1  |
| 32 | Comnet Services                | 2  |

Campus placement in last three years with minimum salary, maximum salary and average salary

Minimum Salary - 3.5 Lakhs/Per annum

Maximum Salary - 5 lakhs/ annum

Average Salary - 4 Lakhs /annum

- ✓ Name and duration of programme(s) having affiliation/collaboration with Foreign University(s)/Institution(s) and being run in the same Campus along with status of their AICTE approval. If there is foreign collaboration, give the following details:

**NIL**

- ✓ For each Collaborative/affiliated Programme give the following:

**Not Applicable**

- ✓ Whether the Collaborative Programme is approved by AICTE? If not whether the Domestic/Foreign Institution has applied to AICTE for approval as required under notification no. 37-3/Legal/2005 dated 16<sup>th</sup> May, 2005

**Not Applicable**

## VI. FACULTY

Branch wise list faculty members:

- Permanent Faculty
- Visiting Faculty
- Adjunct Faculty
- Guest Faculty

| Name of the Programme<br>(UG & PG) | DETAILS OF FACULTY                   |  |                              |                                | Nature of Appointment  |   |
|------------------------------------|--------------------------------------|--|------------------------------|--------------------------------|--|---|
|                                    | Professor<br>(Rs 16400-22400 scales) | Assistant Professors/ Readers<br>(Rs 1200-18000) | Lecturers<br>(Rs 8000-13500) | Others/<br>visiting<br>faculty | Total number of<br>faculty<br>Permanent &<br>Approved by<br>University | Total number<br>of faculty on<br>ad-hoc basis |
| CE                                 | 07                                   | 07   | 06                           | -                              | 20   | -   |
| MECH                               | 05                                   | 09   | 08                           | -                              | 22   | -   |
| ECE                                | 05                                   | 10   | 06                           | -                              | 21   | -   |
| CSE                                | 03                                   | 08   | 15                           | -                              | 26   | -   |
| IT                                 | 02                                   | 04   | 06                           | -                              | 12   | -   |
| EEE                                | 02                                   | 09   | 08                           | -                              | 19   | -   |
| EIE                                | 01                                   | 04   | 05                           | -                              | 10   | -   |
| CHE                                | 01                                   | 02   | 04                           | -                              | 07   | -   |
| MATHS                              | 03                                   | 04   | 01                           | -                              | 08   | -   |
| PHYSICS                            | 02                                   | 05   | 01                           | -                              | 08   | -   |
| CHEMISTRY                          | -                                    | 01   | 04                           | -                              | 05   | -   |
| HSS                                | -                                    | 01   | 03                           | 02                             | 06   | -   |
| <b>Total</b>                       | <b>31</b>                            | <b>64</b>  | <b>67</b>                    | <b>2</b>                       | <b>164</b>   |   |

Permanent Faculty: Student Ratio - 1 : 13.5

✓ Number of faculty employed and left during the last three years - 4

**VII. PROFILE OF DIRECTOR/PRINCIPAL WITH QUALIFICATIONS, TOTAL EXPERIENCE, AGE AND DURATION OF EMPLOYMENT AT THE INSTITUTE CONCERNED**

1. Name : **Dr.V.PRITHVIRAJ**
2. Father's Name : Mr.Venkatapathy Raju
3. Address : Office : **Principal**  
PONDICHERRY ENGINEERING COLLEGE  
Pondicherry 605 014  
Phone : (0413) 2655214
- Residence : Principal Quarters  
Pondicherry Engineering College (Campus)  
Pondicherry
4. Nationality : Indian
5. Date of birth : 06.01.1951
6. **Educational Qualification** : B.E., D.S.Sc., M.Sc(Engg). Ph.D
7. **Field of Specialization:** Broadband and Wireless Communication

8. Experience :

Graduated from College of Engineering, Guindy in the year 1972 in Electronics and Communication Engineering specialization. Subsequently, he has completed his MS by research from the Electrical Department of IITM and Ph.D from the E&ECE Department of IIT, Kharagpur specialization in the area of Signal Processing Techniques applied to Array Antennas.

He has more than 30 years of teaching experience and over 15 years of R&D experience between the two IITs. At present he is holding the post of Professor, Electronics and Communication Engineering and additionally holding the charge of Principal.

He is one of the founder members of PEC and joined the institute from inception in July 1985 and still serving in the same institute.

He has supervised 1 Ph.D dissertation and more than 50 Master's thesis and at present guiding 3 Ph.D scholars. He has published more than 60 papers in international / national conferences and in journals.

He is an expert member of Southern and South Western region of AICTE and also NBA Accreditation member of AICTE, New Delhi.

Professor Prithviraj was responsible for establishing the Training and Placement Cell at PEC in 1988- 89 and has served the institute in the T&P Cell in various positions as Placement Officer, Advisor and Chairman and he has placed more than 1000 students on campus over the years of his tenureship in the T&P Cell.

He has been nominated as an expert member for monitoring Indo-French international projects in the area of Information Technology. He was an expert member for setting up the Cyber Forensic Laboratory for C- DAC at Trivandrum.

**He has undertaken more than 4 research projects with AICTE / MHRD and one research project in the area of 'Chaotic Encryption for Secure Communication' from Department of Information Technology, Ministry of Information and Communication Technology, New Delhi.**

**Professor Prithviraj is a recipient of the IEEE international award in the year 1984 from USA for Outstanding Branch Counsellor. He has served as an Academic Council Member of Pondicherry University and as Chairman and Board member of Electronics and Communication Engineering Board of Pondicherry University.**

**He has served as Director (Information Technology) for Government of Puducherry from August 2004 to December 2005 and initiated the e- governance activities for Union Territory of Puducherry. His major areas of interest include 'Broadband and Wireless Communication Mobile Computing, Telemedicine, Chaotic Encryption, e-Governance.**

**Date of Appointment in the present institution : 08.07.1985**

FOR EACH OF THE FACULTY PROFILE - **PLEASE SEE ANNEXURE - I**

## VIII. FEE

✓ Details of fee, as approved by State fee Committee, for the Institution.

| S.No.            | Category  | CET quota                        |              |                                  |              | Management quota                 |                                  |
|------------------|---|----------------------------------|--------------|----------------------------------|--------------|----------------------------------|----------------------------------|
|                  |   | Fixed by the State Fee Committee |              | Being charged by the Institution |              | Fixed by the State Fee Committee | Being charged by the Institution |
|                  |   | Rs                               | Rs           | Rs                               | Rs           |                                  |                                  |
|                  |   | UG                               | PG           | UG                               | PG           |                                  |                                  |
| 1.               | Admission Fee   | 1000                             | 1000         | 1000                             | 1000         |                                  |                                  |
| 2.               | Tuition Fee   | 15000                            | 17000        | 15000                            | 17000        |                                  |                                  |
| 3.               | University fee (Examination fee, Registration fee etc.) | 2015                             | 2015         | 2015                             | 2015         | N/A                              |                                  |
| 4.               | Hostel fee (Rent etc.)                                  | 6000                             | 6000         | 6000                             | 6000         |                                  |                                  |
| 5.               | Laboratory fee  | 1000                             | 1000         | 1000                             | 1000         |                                  |                                  |
| 6.               | Library fee   | 1500                             | 1500         | 1500                             | 1500         |                                  |                                  |
| 7.               | Any other   |                                  |              |                                  |              |                                  |                                  |
|                  | Special Fee   | 3000                             | 3000         | 3000                             | 3000         |                                  |                                  |
|                  | Comp. Fee   | 1500                             | 1500         | 1500                             | 1500         |                                  |                                  |
|                  | Cultural Fee  | 500                              | 500          | 500                              | 500          |                                  |                                  |
|                  | Lab fee   | 1000                             | 1000         | 1000                             | 1000         |                                  |                                  |
|                  | Workshop fee  |                                  |              |                                  |              |                                  |                                  |
| <b>Total Fee</b> |   | <b>32515</b>                     | <b>34515</b> | <b>32515</b>                     | <b>34515</b> |                                  |                                  |

✓ Time schedule for payment of fee for the entire programme.

During the course of study the student are to pay the fee every semester within one month time.

- ✓ No. of Fee waivers granted with amount and name of students.

Nil

- ✓ Number of scholarship offered by the institute, duration and amount

| Name of the Scholarship   | Amount  | Criteria   |
|---|---|--|
| 1. National Scholarships Scheme   | Rs.120 per month for day-scholars and Rs.300 per month for hostellers.  | 60% marks and above in the aggregate in the qualifying examination in the first attempt and whose parental income does not exceed Rs.25,000 per annum.                                   |
| 2. Pondicherry State Post-Metric Scholarship Scheme                                     | Rs.120 per month for day-scholars and Rs.300 per month for hostellers   | Same as the National Scholarship Scheme  |
| 3.National Scholarship Scheme for the Children of Primary and Secondary School Teachers | Rs.120 per month for day-scholars and Rs.300 per month for hostellers   | Awarded to the children of working teachers of recognized pre-primary, primary and secondary schools in the Union Territory of Pondicherry.  |
| 4. Post-Metric Scholarship Scheme to Scheduled Caste Students                           | Rs. 300 per month for day scholars and Rs.740 per month for hostellers. | Awarded to Scheduled Caste students who have secured as aggregate of at least 55% marks in the qualifying examination and whose parental income does not exceed Rs.1,00,000/- per annum. |

- ✓ Criteria for fee waivers / scholarship.

Not Applicable

- ✓ Estimated cost of Boarding and Lodging in Hostels.

Rs 450- per months towards room rent, Electricity, Water and Establishment charges.  
Boarding charges by dividing systems i.e Rs.1000/- per month approximately.

### IX. ADMISSION

Number of seats sanctioned with the year of approval.

Number of students admitted under various categories each year in the last three years.

| Courses       | 1 <sup>st</sup> Year of approval by AICTE (give approval ref. no. & date) | 2008-09                        |                   | 2007-2008         |                   | 2006-2007         |                   | Status of Accreditation (Validity period)               |
|---------------|---|--------------------------------|-------------------|-------------------|-------------------|-------------------|-------------------|---|
|               |   | Sanctioned intake              | Actual admissions | Sanctioned intake | Actual admissions | Sanctioned intake | Actual admissions |   |
| <b>B.Tech</b> |   |                                |                   |                   |                   |                   |                   | three years for all courses with effect from 16.03.2007 |
| CE            | F.24-9/83-T.5 Dated 20.2.1984   | 60                             | 60                | 60                | 60                | 60                | 60                |   |
| ME            |   | 60                             | 60                | 60                | 60                | 60                | 60                |   |
| ECE           |   | F.24-20/73-T.5 Dated 26.5.1989 | 60                | 60                | 60                | 60                | 60                |   |
| CSE           | 60  |                                | 60                | 60                | 60                | 60                | 60                |   |
| EEE           | F.44-1/92- ICTE/4668 Dated 30.9.93  | 60                             | 60                | 60                | 60                | 60                | 60                |   |
| CHE           | F.No.730-51-101(E)/ET/97 dated 29.8.1997                                  | 30                             | 30                | 30                | 30                | 30                | 30                | Period of validity is for And for ECE five years        |
| E&IE          | F.No.730-51-101(E)/ET/97 dated 24.05.2006                                 | 60                             | 60                | 60                | 60                | 30                | 30                |   |
| IT            | F.NoET-PON(AC)/DEG/2000` dated 28.10.2000                                 | 60                             | 60                | 60                | 60                | 60                | 60                |   |

| M.Tech |              |  |            |                               |            |            |            |    |   |
|--------|--------------|--|------------|-------------------------------|------------|------------|------------|----|---|
| PGFT)  | CE ACT       | F.No.PON-01 / BOS(Pa)91 dated 22.6.98.         | 17         | Admissions are under progress | 17         | 08         | 17         | 8  | . |
|        | CE EE        | F.No.XVIII-AIBPG/APP/ T/2002 dated 08.08.02    | 18         |                               | 18         | 10         | 18         | 13 |   |
|        | ME ET        | F:Pon-3/B-11/BOS(PG)91 dated 09.05.94          | 17         |                               | 17         | 05         | 17         | 15 |   |
|        | ECE ECE      | F.3-21/89 – T.2/ TD.VI dated 20.10.89          | 17         |                               | 17         | 17         | 17         | 17 |   |
|        | CSE DCS      | F.No.XU- AIBPG/APP-1539/ET/2001 dated 21.08.01 | 25         |                               | 25         | 25         | 25         | 25 |   |
|        | EEE EDC      | F.No.XU- IBPG/AP-1538/ET/2001 dated 21.08.01   | 25         |                               | 25         | 25         | 25         | 25 |   |
|        | ME – PDM     | F.No.730-51-(E)/ET/97 dated 24.05.2006         | 18         |                               | 18         | 09         |            |    |   |
|        | ECE – WC     | F.No.730-51-(E)/ET/97 dated 24.05.2006         | 18         |                               | 18         | 18         |            |    |   |
|        | CSE - IS     | F.No.730-51-(E)/ET/97 dated 24.05.2006         | 18         |                               | 18         | 18         |            |    |   |
|        | MCA          | No.85/CCI/CMP/2/100 dated 6.2.1986             | 30         |                               | 30         | 30         | 30         | 30 |   |
|        | <b>Total</b> |  | <b>653</b> | <b>653</b>                    | <b>615</b> | <b>569</b> | <b>553</b> |    |   |

✓ Number of applications received during last two years for admission under Management Quota and number admitted.

Nil

## X. ADMISSION PROCEDURE

- ✓ Mention the admission test being followed, name and address of the Test Agency and its URL (website).

Centralised Admission Committee constituted by the Govt. of Pondicherry  
Conducts test for the admission of students.

| Name of the Course         | Admission test being followed                        | Name and address of the test agency and its URL  |
|----------------------------|--|--|
| B.Tech                     | No   | Not applicable   |
| M.Tech / M.Phil,<br>M.Sc., | GATE percentile score Non-GATE Entrance Examination. | CENTAC - PG, Govt. of Puducherry, Pondicherry Engineering College, Pondicherry-14. <a href="http://www.pec.edu">www.pec.edu</a>  |
| M.C.A.                     | CET - Common Entrance Test                           | CENTAC - MCA, Govt. of Puducherry, Pondicherry Engineering College, Pondicherry-14. <a href="http://www.pec.edu">www.pec.edu</a> |

- ✓ Number of seats allotted to different Test Qualified candidates separately [AIEEE/CET (State conducted test/University tests)/Association conducted test]  
There are 63 seats allotted for the admission of candidates from other states/Union Territories and the seats are filled by the CENTAC by giving weightage to the marks secured in the AIEEE examinations.

**B. Tech Course: AIEEE – 68.**

▼ Calendar for admission against management/vacant seats:

| <b>Particulars</b>                                      | <b>B.Tech</b>  | <b>M.Tech/M.Sc./M.Phil</b>   | <b>M.C.A.</b>   |
|---|--|--|---|
| Last date for request for applications                  | 16th June 2008   | 30 <sup>th</sup> June 2008   | 30 <sup>th</sup> June 2008  |
| Last date for submission of applications                | 23 <sup>rd</sup> June 2008   | 23 <sup>rd</sup> July 2008   | 23 <sup>rd</sup> July 2008  |
| Dates for announcing final results                      | 23 <sup>rd</sup> July 2008   | 5 <sup>th</sup> August 2008  | 5 <sup>th</sup> August 2008   |
| Release of admission list                               | 23 <sup>rd</sup> July 2008   | 11 <sup>th</sup> August 2008   | 11 <sup>th</sup> August 2008  |
| Date for acceptance by the Candidate                    | 18 <sup>th</sup> August 2008   | 18 <sup>th</sup> August 2008   | 18 <sup>th</sup> August 2008  |
| Last for closing of admission                           | 30 <sup>th</sup> August, 2008 and as per University norms  | 30 <sup>th</sup> August 2008 and as per University norms   | 30 <sup>th</sup> August 2008 and as per University norms  |
| Starting of the Academic session                        | 1 <sup>st</sup> week of July '08 for odd semester 1 <sup>st</sup> week of January '09 for even semester  | 1 <sup>st</sup> week of July '08 for odd semester 1 <sup>st</sup> week of January '09 for even semester        | 1 <sup>st</sup> week of July '08 for odd semester 1 <sup>st</sup> week of January '09 for even semester         |
| The policy of refund of the fee, in case of withdrawal. | 100% repayment for the students transferred to other colleges under CENTAC. Only the caution deposit and library deposit will be refunded for the discontinued students. | If a student discontinues the course completely, only the caution deposit and library deposit will be refunded | If a student discontinues the course completely, only the caution deposit and library deposit will be refunded. |

**XI. CRITERIA AND WEIGHTAGES FOR ADMISSION**

| <b>Weightages</b>                   | <b>B. Tech</b>                                  | <b>M.Tech.</b>   | <b>M.Sc./M.Phil</b>  | <b>M.C.A.</b>                                |
|-------------------------------------|---|--|--|--|
| Admission Test                      | Nil   | 100% weightage for GATE percentile score<br><br>100% weightage of entrance exam for Non-GATE students                            | 100% weightage for the entrance examination  | 100% weightage for the entrance examination. |
| Marks in the qualifying examination | 100% weightage for the H.Sc., examination marks | If a tie in GATE score or Non-GATE score, the aggregate percentage of marks in the qualifying exam shall be the basis for merit. | If a tie in the entrance exam score, the aggregate percentage of marks in the qualifying exam shall be the basis for merit | Same as M.Sc course.                         |

✓ Mention the minimum level of acceptance if any

| <b>Particulars</b>          | <b>B. Tech</b>   | <b>M.Tech.</b>  | <b>M.Sc./M.Phil</b>                                      | <b>M.C.A.</b>                                  |
|-----------------------------|--|---|--|--|
| Minimum level of acceptance | Should have a pass in the H.Sc.(Academic) examination with 45% marks in aggregate. | 55% marks in the qualifying degree examination or equivalent CGPA | 55% marks in major and minor subjects or equivalent CGPA | 55% marks in the qualifying degree examination |

*Note: Candidates belonging to SC/ST who have a mere pass in the qualifying examination are also eligible.*

- ✓ Mention the cut-off levels of percentage & percentile scores of the candidates in the admission test for the last three years.

| <b>B.Tech Course</b> | <b>2006-07</b> | <b>2007-08</b> | <b>2008-09</b> |
|----------------------|----------------|----------------|----------------|
| Maximum cut-off      | 178.791        | 166.098        | N/A            |
| Minimum cut-off      | 93.793         | 86.083         | N/A            |

**Item No I - XI must be given in information brochure and must be hosted as fixed content in the website of the Institution.**

**The Website must be dynamically updated with regard to XII–XV.**

## **XII. APPLICATION FORM**

- ✓ Downloadable application form, with online submission possibilities

There is no provision for submitting the application thorough online. Candidates are to submit the application by obtaining from the CENTAC.

Please see CENTAC website [www.centac.pon.nic.in](http://www.centac.pon.nic.in)

## **XIII. LIST OF APPLICANTS**

- ✓ List of candidates whose applications have been received along with percentile/percentage score for each of the qualifying examination in separate categories for open seats. List of candidates who have applied along with percentage and percentile score for Management quota seats.

NIL

#### XIV. RESULTS OF ADMISSION UNDER MANAGEMENT SEATS/VACANT SEATS

NOT APPLICABLE

PONDICHERRY ENGINEERING COLLEGE IS A  
GOVERNMENT SPONSORED INSTITUTION.

#### XV. INFORMATION ON INFRASTRUCTURE AND OTHER RESOURCES AVAILABLE

LIBRARY:

Ø Number of Library books/Titles/Journals available (programme-wise)

| Sl.No | Course(s)     | Number of titles of the books | Number of volumes | Journals |               |
|-------|---------------|-------------------------------|-------------------|----------|---------------|
|       |               |                               |                   | National | International |
|       | CE            | 3542                          | 7233              | 16       | 5             |
|       | ME            | 3245                          | 5725              | 5        | 5             |
|       | ECE           | 2526                          | 4751              | 5        | 9             |
|       | CSE & IT      | 4966                          | 8483              | 8        | 8             |
|       | EEE           | 1540                          | 3106              | 3        | 2             |
|       | E&IE          | 493                           | 1053              | 1        | 3             |
|       | Ch. E         | 447                           | 670               | 6        | 5             |
|       | Maths,        | 7939                          | 11745             | 8        | 1             |
|       | Physics &     |                               |                   | 4        | 2             |
|       | Chemistry     |                               |                   | 3        | 1             |
|       | General       |                               |                   | 16       | -             |
|       | IEEE Journals |                               |                   |          | 35            |

Total number of books available: 42,689

Ø List of online National/International Journals subscribed.

The journals of IEEE, AIME and AICE are available online through INDEST consortium. E-Library facilities

The circulation and stock section of the library has been computerized. The CDs which comes with the books are stored and available for loan. The journals of IEEE, AIME and AICE are available online through INDEST consortium.

**LABORATORY & WORKSHOP**

| SI.No.   | Name of the Laboratory / Workshop  | Carpet Area available ( Sq.M) |
|----------|--|-------------------------------|
|          | <b>Workshop</b>  |                               |
|          | <b>Basic Workshop and Machine shop</b>   | <b>1,021.11</b>               |
|          | <b>Total</b>   | <b>1,021,11</b>               |
|          | <b>Laboratory:</b>   |                               |
| <b>1</b> | <b>Civil Engineering Department</b>  | <b>1,444.35</b>               |
|          | <b>S.M Lab, Geo-Tech. Lab, Concrete lab, Transportation Engineering Lab, Concrete Field testing Lab, NDT Lab, PH Lab, Environmental Engineering Lab, Survey Lab, Geology and Model Lab, Computer Lab and Casting yard Lab.</b>   |                               |
| <b>2</b> | <b>Mechanical Engineering Department</b>   | <b>1,665.44</b>               |
|          | <b>Dynamics and measurement Lab, Thermal Engineering Lab, F M Lab, Metallurgy Lab and Computer Lab</b>   |                               |
| <b>3</b> | <b>Electrical &amp; Electronics Engineering Dept.</b>  | <b>1,404.07</b>               |
|          | <b>E M Lab I &amp; II, Model Lab, Basic Electrical Lab, Wiring Lab, Electrical workshop, Micro Power and Protection Lab, Power System &amp; Control lab, Power Electronics lab, Project Lab and Electronics Lab.</b>   |                               |
| <b>4</b> | <b>Electronics &amp; Communication Engg. Dept.</b>   | <b>711.11</b>                 |
|          | <b>Advanced Communication Lab, Basic Electronics Lab, Micro wave Lab, signal Processing lab, TV Lab, Electronics Maintenance Lab, PCB Lab, Pulse &amp; Digital Lab, Single PCB Lab, Double PCB Lab, Yellow Room &amp; Dark Room and Mobile Communication lab, Linux Lab and CAD Lab.</b> |                               |
| <b>5</b> | <b>Computer Science &amp; Engineering Department and Information Technology Department.</b>  | <b>706.61</b>                 |
|          | <b>MCA Lab, System Lab, CASIT Lab, Thin Client Lab, Wireless LAN, Multimedia Lab, Information Security Lab, Research Lab, Digital Lab, Microprocessor Lab, Hardware Trouble Shooting Lab, Computer Center, Browsing Center.</b>  |                               |



Ø List of facilities available.

#### Games and Sports Facilities

##### Indoor Games

Chess, Carom, table tennis,

##### Outdoor Games

Basket Ball, Volley Ball, Foot Ball, Hockey, Cricket and Tennis.

##### Extra Curricular Activities

College Day, , Sports Day, Inter College Cultural Meet, etc,

##### Soft Skill Development Facilities

Language Laboratory available.

Number of Classrooms and size of each – 50 total area 4,393.49 Sq.m

Number of Tutorial room/Drawing hall -- 14 total area 1,490.44 Sq.m  
and size of each

Number of laboratories and size of each - 75 total area 8,851.18 Sq.m

Number of Computer Centres with - 4 total area 629.54 Sq.m  
capacity of each

Central Examination Facility, Number - 4 rooms with a total capacity of 240 seats.

Teaching Learning process - By Lecturer, Tutorial Seminar etc.

Ø Curriculum and syllabi for each of the programmes as approved by the University. **Enclosed**

Also displayed in the College Website : [www.pec.edu](http://www.pec.edu)

Ø Academic Calendar of the University - Prescribe 180 working days per year.

Ø Academic Time Table - Following 5 days week with 90  
working in a semester

Ø Teaching Load of each Faculty - As prescribed by AICTE norms.  
With 40 teaching hours per week.

Ø Internal Continuous Evaluation System and place - Yes

Two tests and one assignment in a semester.

Ø Students' assessment of Faculty, System in place. - No

For each Post Graduate programme give the following:

i. Title of the programme

| M.Tech |         | Sanctioned Intake | Duration of the course | Accreditation status |
|--------|---------|-------------------|------------------------|----------------------|
| PG(FT) | CE ACT  | 17                | 2                      |                      |
|        | CE EE   | 18                | 2                      |                      |
|        | ME ET   | 17                | 2                      |                      |
|        | ECE ECE | 17                | 2                      |                      |
|        | CSE DCS | 25                | 2                      |                      |
|        | EEE EDC | 25                | 2                      |                      |
|        | ME PDM  | 18                | 2                      |                      |
|        | ECE WC  | 18                | 2                      |                      |
|        | CSE IS  | 18                | 2                      |                      |

ii. Curricula and Syllabi

Displayed in the College Website : [www.pec.edu](http://www.pec.edu)

iii. Faculty Profile

**(Refer Annexure – I)**

- Ø Brief profile of each faculty.
- Laboratory facilities exclusive to the PG programme

**Laboratories facilities are shared by PG and UG courses.**

### **Special Purpose**

Software, all design tools in case

Novell Netware

Windows NT

Turbo C

Turbo Pascal

MS Office

Visual Studio

3D studio Max

Macromedia Director – 8 , Shockwave

Macromedia Web Design Studio

Adobe Publishing Collection

.NET frame Work

DB2

Rational Rose CASE tools

- **Academic Calendar and frame work**

| SI NO. | DATE       | EVENTS  |
|--------|------------|---|
| 1.     | 02.07.2008 | Starting of classes for odd semester.   |
| 2.     | 18.07.2008 | Last date for payment of fees without fine.   |
| 3.     | 25.07.2008 | Last date for payment of fees with fine.  |
| 4.     | 20.08.2008 | Starting of Classes for first year.   |
| 5.     | 15-08-2008 | Independence Day.   |
| 6.     | 16-08-2008 | De-Jure Transfer Day.   |
| 7.     | 03.09.2008 | Vinayaga Chathurthi   |
| 8.     | 11.09.2008 | Onam  |
| 9.     | 12.09.2008 | Onam  |
| 10.    | 16-09-2008 | PECOFES.  |
| 11.    | 17-09-2008 | PECOFES.  |
| 12.    | 18-09-2008 | PECOFES.  |
| 13.    | 02-10-2008 | Gandhi Jayanthi.  |
| 14.    | 02.10.2008 | Ramzan  |
| 15.    | 08.10.2008 | Ayudha Pooja  |
| 16.    | 27.10.2008 | Deepavali   |
| 17.    | 29.10.2008 | University Practical Exam begins for all classes except for I year                                    |
| 18.    | 31.10.2008 | Last working day for all classes except I year  |
| 19.    | 01.11.2008 | Winter vacation starts. University theory exams begin ( for senior classes)                           |
| 20.    |            |   |
| 21.    | 30.11.2008 | Last working day for First Year   |
| 22.    | 01.12.2008 | Starting of classes for even semester for all ( except I year )<br>University exams beings for I year |
| 23.    | 09.12.2008 | Vaikunta Egadasi  |
| 24.    | 18.12.2008 | Last date for payment of fees without fine (except I year)  |
| 25.    | 24.12.2008 | Christmas Eve   |
| 26.    | 25.12.2008 | Christmas   |
| 27.    | 27.12.2008 | Starting of classes for I year  |
| 28.    | 30.12.2008 | Winter vacation ends  |
| 29.    | 30.12.2008 | Last date for payment of fees with fine ( except I year)  |
| 30.    | 01.01.2009 | New Year  |
| 31.    | 07.01.2009 | International Conference – Energy Engineering 2009  |
| 32.    | 08.01.2009 | International Conference - Energy Engineering 2009  |
| 33.    | 09.01.2009 | International Conference - Energy Engineering 2009  |
| 34.    | 14.01.2009 | Bogi  |
| 35.    | 15.01.2009 | Pongal  |

|     |            |   |
|-----|------------|---|
| 36. | 19.01.2009 | Last date for payment of fees with fine for I year                  |
| 37. | 26.01.2009 | Republic Day  |
| 38. | 03.03.2009 | Holi  |
| 39. | 06.03.2009 | Sports Day  |
| 40. | 16.03.2009 | College Day   |
| 41. | 11.04.2009 | Last working day for all classes except I year                      |
| 42. | 02.05.2009 | Summer Vacation starts. University exams begin ( except for I year) |
| 43. | 14.04.2009 | Tamil New Year Day  |
| 44. | 01.05.2009 | May day   |
| 45. | 06.05.2009 | Last working day for I year   |
| 46. | 08.05.2009 | University exams being for I year                                   |
| 47. | 30.06.2009 | Summer Vacation ends  |
| 48. | 02.07.2009 | Classes reopen for 2008-2009  |

• Research focus

| S I No. | Name of Project  | Duration of Project | Amount sanctioned by AICTE | Reference No and Year and date of sanction | Balance As on 17-08-07 | Project Status   |
|---------|--|---------------------|----------------------------|--|------------------------|--|
| 1.      | Photo stimulated Luminescence X-ray storage Phosphors Based on impurity Doped Rubidium halides-Dr.S. Nagarajan                               | 3 years             | Rs. 9,50,000/-             | 8018/RDII/BOR/TAP/1999-2000 dt. 24-3-2000  | Rs. 21021.73           | Utilization Certificate and audit report submitted, balance amount Return to AICTE |
| 2.      | Modernisation of Concrete Laboratory-MODROB-Dr. D. Vovindarajulu   | 2 years             | Rs.90,000/-                | 8020/RID/401/01-02 dt. 28.3.2002           | -                      | Utilisation Certificate and audit report submitted                                 |
| 3.      | Self Development Programme-Dr. P. Dhananjayan  | 1 Year              | Rs.50,000/-                | 8020/RID/III/NAF(05)/01-02 dt. 28-3-02     | -                      | Utilisation certificate and audit report submitted                                 |
| 4.      | Development of a virtual laboratory for the power electronics circuits and systems through computer simulation-TAPTEC-Mr. A. Muthuramalingam | 3 years             | Rs.10,00,000               | 8020/RID/TAPTEC-32/2001-02 dt. 04-3-2002   | -                      | Utilisation certificate and audit report submitted                                 |
| 5.      | Modernisation and Removal of Obsolescence-MODROB-Dr. S. Subramanian  | 2 years             | Rs,6,50,000/-              | 8017/RDII/MOD/DEG(404)/9899 dt. 24-3-1999  | Rs.3,531/-             | Utilisation Certificate and audit report submitted                                 |
| 6.      | Rheological and strength studies on Flyash-based Fibre Reinforced Mortar/concrete-R&D G. Ramakrishna   | 1 year              | Rs.4,00,000/-              | 8020/RID/R&D-80-2001-02 dt. 04-3-2002      | -                      | Project on going   |

|    |   |  |               |  |             |                  |
|----|---|--|---------------|--|-------------|------------------|
| 7  | Modernisation of Civil Engg. Lab. (51121)                                     |  | Rs,10,00,000  | F.3-1/91 TD-VI dt.27-2-1992 MHRD       | Rs.2,89,187 | Project on going |
| 8  | Mod. Of Advanced Digital Commn. Lab. (51124)                                  |  | Rs.5,00,000/- | F.3-1/91 TD-II dt.27-2-1992 MHRD       | Rs 90,966   | Project on going |
| 9  | Characterisation measurement of a single and multimode optical fibres (51125) |  | Rs.8,00,000/- | F2-1/92/TD dt.11-1-1993 MHRD           | Rs.15,761   | Completed        |
| 10 | Mod. Of ECE to Support CAD System(51126)                                      |  | Rs,10,00,000  | F.3-1/93 TD-VI dt.27-12-1993 MHRD      | Rs.41,465   | Completed        |
| 11 | Development of state of art Biomedical Engg (51198)                           |  | Rs.10,00,000  | F.No.800-1/THA/94/Rec 385 dt.24-1-1995 | Rs.58,816   | Completed        |

|    |   |         |               |  |             |                        |
|----|---|---------|---------------|--|-------------|------------------------|
| 12 | Development of fibre optic sensors(51309)   |         | Rs.5,00,000/- | 8017/RDII/BOR/95 TELE 66/297 dt.29-12-1995 AICTE | Rs.53,174   | Project on going       |
| 13 | Chemically Mod. Low cost treatment for heavy metal (51310)  |         | Rs.3,00,000/- | 8017/RDII/BOR/95 TEL V15/156 dt.29-12-1995 AICTE | Rs.56,920   | Project on going       |
| 14 | Deve. Of Post Graduate Education and Research (51324)   |         | Rs.14,23,200  | F.No.449/PON-fund/E&T(PG)/96 dt.13-3-1996 AICTE  | -           | Project on going       |
| 15 | Post Graduate M.Tech.(E.T) (51490)  |         | Rs.20,92,701  |  | Rs.3,19,976 | Project on going       |
| 16 | Durability study onFal-G – Building – Bricks and Blocks (51491)   |         | Rs.4,00,000/- | F.No.8017/RDII/BOR/95 dt.11-3-1997               | Rs.2,081    | Completed              |
| 17 | Fab. Of Wind Mill & Energy Park (51760)   |         | Rs.35,000/-   | DRDA/EP/F.46/3/97-98 dt.17-3-98                  | Rs.6,493    | Project on going       |
| 18 | Mod. Of Hardware & Troubleshooting Lab (51825).   |         | Rs.6,75,000/- | 8017/RDII/MOD/DEG(402)98-99 dt.24-3-1999         | Rs.57,730   | Project on going       |
| 19 | Exploration of Object Oriented Software Testing Techniques- R.Manogaran (52046)   | 2 Year  | Rs 5,00,000/- | 8017/RDII/R&D/BOR/99-2000 dt.20-10-2002          | Rs.79,889   | Project on going       |
| 20 | Studies on netural fibre reinforced building materials using Industrial waste (52272)   |         | Rs.2,50,000/- | HR/OY/E-10/99 dt.08-6-2001                       | Rs.23,817   | Project on going       |
| 21 | Theological and strength studies on Flyash based fiber reinforced concrete (52445)  | 1 Year  | Rs.4,00,000/- | 8020/RID/R&D-80.2001-02 dt.04-3-2002             | Rs.1,04,011 | Project on going       |
| 22 | Generic E-Commerce Solutions- Santhi Baskaran (52446)   | 2 Years | Rs.4,00,000/- | 8020/RID/TAPTEC-31/2001-02 dt.04-3-2002          | Rs.1,91,100 | Project on going       |
| 23 | IIPC Scheme – Dr.V.Pritjhviraj (52447)  | 2 Years | Rs. 5,40,000  | 8020/RID/111/IIPC/26/01-2/98-99 Dt.05-3-2002.    | Rs.3,12,315 | Project on going       |
| 24 | Evaluation of effects of particle size and % volume fraction on the feddic behavisur of 7075-AL-FICP composite synthesized through striating rule Study and Route (52458)                       | 3 years | Rs.2,55,037/- | 70(0043)01EMR-II dt.28-3-00                      | Rs.5,575    | Completed              |
| 25 | Serc Fast Track Proposals for Young Scientist Project (52646) Dr. P. Palanivel  | 3 Years | Rs.5,00,000/- | SR/FTP/PS-97/2001 dt.17-12-2002                  | -           | Completed UC submitted |
| 26 | P.G.Program (52666)   |         |               |  | Rs.5,89,008 | Project on going       |
| 27 | Semi batch Membrane Separation Process for Treatment of Industrial Effluents Experiments, Model and Optimal Control – TAPTEC – Dr.S.Sundaramoorthy (25227)                                      | 2 Years | Rs.13,60,000  | 8021/RID/NPROJ/TAP/ 2002-03 dDt.10-3-2003        | Rs1,05,550  | Project on going       |
| 28 | Study on optical and thermal parabolic of a compound concentrator (25299)   |         | Rs.108726     | The Foundation for World Education, USA          | Rs.24302    | Project on going       |
| 29 | Development and Implemantion of a Neuro Fuzzy Control Strategy for Active Electromagnetic bearings and its performance evaluation using 3 Dimensional Finite Element Methods-Dr.V.Soundararajan | 2 Years | Rs.6,20,000/- | 8021/RID/NPROJ/TAP-172/2002-03 dt.19-5-2003      | Rs. -       | Project on going       |

|    |  |         |               |  |              |  |
|----|--|---------|---------------|--|--------------|--|
| 30 | Secure Communication Scheme using Chaotic Cryptography – Dr.V.Prithviraj(52902)  | 2 Years | Rs.7,50,000/- | 12(31)/04-IRSD dt.07-4-2004                | Rs.5,41,125  | Project on going                                   |
| 31 | Novel Complex forming acrylate Polymers for metal ion recovery – Dr.T.Kalaiyappan (52796)  | 3 Years | Rs.5,00,000/- | SR/FTP/CSA-14/2002 dt.16-7-2003            | -            | Project on going                                   |
| 32 | Studies on Fuzzy Control Decision support system for Integrated surface water restoration and Drought Prediction – Application on Rural and semi –urban Areas – Dr.R.Saravanane (25225)            | 2 Years | Rs.4,20,000/- | 8021/RID/NPROJ/R&D-63/2002-03              | Rs.2,89,1867 | Project on going                                   |
| 33 | Modernisation of Environmental Engineering Lab. Dr.D.Govindarajulu (25226)   | 2 Years | Rs.8,00,000/- | 8021/RID/NPROJ/OD-95/2002-03 dt.10-3-2003  | Rs5,34,64    | Project on going                                   |
| 34 | Upgradation of the Power Electronics Lab. To a CAD based power Electronics system and solid state Drives Lab. And Modernisation of class room Teaching & Lab. Instruction. Dr.K.Manivannan (52893) | 2 Years | Rs.5,00,000/- | 8022/RID/NPROJ/MOD-44/2003-04 dt/19-1-2004 | Rs.39,837    | Project on going                                   |
| 35 | Steam Reformed Producer Gas for Power Generation Dr.K.Subbarayulu (52897)  | 3 Years | Rs.9,00,000/- | 8022/RID/NPROJ/RPS-2003-04 dt/19-1-2004    | Rs.5,40,794  | Project on going                                   |
| 36 | Fundamental investigations on the Electrical Resistivity for certain Hexagonal - Dr.R.Sivakumar (52763)  | 3 Years | Rs.7,45,000/- | 8SR/FTP/PSA-083/2001 dt.11-6-2003          | -            | completed  |
| 37 | Fabrication of Characterization of Transparent Ferroelectric Glass Nanocomposites for optoelectronic Application - Mrs.B.J.Kalaiselvi (52895)  | 3 Years | Rs.5,00,000/- | 8022/RID/NPROJ/RPS-94-04 dt.22-3-2004      | Rs.139453    | Project on going                                   |
| 38 | A Model Ontological Library for Engg. And Basic sciences through knowledge Engg.- Mr.G.Aghila(52901)   | 2 Years | Rs.8,30,000/- | 8022/RID/NPROJ/RPS-109-04 dt.22-3-2004     | Rs.3,21,686  | Project on going                                   |
| 39 | Modernisation of Engg. Workshop with MICO-BOSCH Power Tools  |         | Rs.3,50,000/- | 8023/RID/MOD/09/04/05 dt.11-8-2004         | Rs.350000    | Project on going                                   |
| 40 | Magneto Viscosity studies on Temperature Sensitive Magnetic Fluid- Dr.G.Vaidyanathan (53068)   | 3 Years | Rs.8,27,000/- | 03(1001)EMR-II dt.16-4-2004                | -            | Utilisation Certificate and audit report submitted |
| 41 | Investigation of Methodologies for the Production of Reactive Rice Husk ash- Ms.A.Muthadhi (53103)   | 3 Years | Rs.6,22,000/- | SR/WOS-A/ET-08/2004 dt.29-3-2005           | Rs.29,013    | Project on going                                   |

|    |   |          |                |  |               |                        |
|----|---|----------|----------------|--|---------------|------------------------|
|    |   |          |                |  |               |                        |
| 42 | Staff Development Program<br>Dr. T. Senthilvelan (53105)  |          | Rs.1,00,000/-  | 1-78/FD/SDP(033)/04-05 dt.29-03-05   | Rs.1135       | Completed UC Submitted |
| 43 | Control of nox emission in a biodiesel fuelled engine using natural and synthetic additives<br>Mrs. P. Pugazvadivu (53219)                                | 2 years  | Rs.4,90,000/-  | No.SR/FTP/ETA-32/2005<br>Dt. 13-12-05  | Rs.51,087     | Project on going       |
| 44 | Synthesis structure and optical properties on polymer galled photonic crystal by irradiation and ion implantation techniques<br>Dr. T. Kaliyappan (53228) | 1 year   | Rs. 25,000/-   | UGC-DAECST Ir.No.CRS-IG03/PEC/TK 8366 dt., 01-09-05                            | Rs.622        | Project on going       |
| 45 | Information Security Education and awareness Project<br>Dr. T.G. Palanivel (53220)  | 1 year   | Rs.3,22,000    | No.4(5).2004-ISEA(vol-II)  | Rs. 11,81,953 | Project on going       |
| 46 | Development of a product line architecture and components for governance applications<br>Dr. K. Vivekanandan (53266)                                      | 3 years  | Rs.4,80,000/-  | F.No.8023/RID/BOR/RPS/-75/2005-06 dt. 10-03-2006                               | Rs. 4,54,481  | Project on going       |
| 47 | Development of a frame work for designing WDM optical network<br>Dr. N. Sreenath (53265)  | 2.5 year | Rs.2,85,000/-  | F.No.8023/RID/BOR/RPS/-76/2005-06 dt. 10-03-2006                               | Rs.2,50,746   | Project on going       |
| 48 | Investigation into the HOT workabi characterizes of aluminum bared composition<br>Dr. T.Senthilvelan (53094)  |          | Rs.9,90,000/-  | 200-62-Fin/04-05/1419/13/41<br>8023/RID/RPS/02/04/05 dt. 23-03-05              | Rs.1,89,065   | Project on going       |
| 49 | Improvement of testing facilities in energy engineering lab<br>Dr. V. Soundararajan (53264)   | 3 years  | Rs.8,20,000/-  | 200-21/FIN/01-02/955/1927 dt. 23.3.06<br>8023/RID/MOID/141/05/6 dt. 18-01-2006 | Rs.8,56,693   | Project on going       |
| 50 | Development of new nanomaterials for sensor application<br>Dr. L.K. Kaliyaperumal (53267)   | 3 years  | Rs.9,10,000/-  | F.No.8023/RID/BOR/RPS-52/2005-06 dt.   | Rs.9,50,746   | Project on going       |
| 51 | Petroleum products testing lab in the interest of public<br>Dr.S. Sundaramoorthy (52246)  |          | Rs.50,00,000   | No.3676/DCS&CA/B4/2005 dt. 19-4-06   | Rs 53,06,151  | Project on going       |
| 52 | Development of gasified suitable for non-woody bio residues for electric power generation<br>Dr. Kumararaja ( 53278)                                      |          | Rs.60,000/-    | No.5/DSTE/RP/So/2006/1042  | Rs.16,174     | Project on going       |
| 53 | Setting up of renewable energy club<br>Dr. Alagumoorthy ( )   | 1 year   | Rs. 17,500/-   | DRDA/EP/REC/05-06 dt. 15-06-06   | 500           | Project on going       |
| 54 | Computational intelligence to emerging electric power systems<br>Dr. C.Christober Asir Rajan , AP, EEE (50139)  | 1 year   | Rs. 2,00,000/- | SR/SS/740/05-06 8816 dt. 24-5-06   | -             | Completed              |
| 55 | Modrob<br>Dr. Prithviraj V ( 53095)   | 3 Years  | Rs. 6,00,000/- | No.200-21 /FIN/2001-2002/1638 dt. 5.4.05<br>8023/RID/MOD/136/04/05 dt. 24-     | Rs. 5,81,044  | Project on going       |

|    |  |         |                |   |                |                  |
|----|--|---------|----------------|---|----------------|------------------|
|    |  |         |                | 3-05  |                |                  |
| 56 | Boyescast Fellow ship Dr. R. gnanadass AP EEE<br>(53418)   | 1 year  | Rs, 11,66,000  | Dept. oof SERC Iocoa State university Ames, Iown USA oys scheme                     | Rs. 3,56,000   | Project on going |
| 57 | Conference on instrumentation systems measurement and automat<br><br>Dr. Anandanatarajan Professor EIE ( )   | 1 year  | Rs. 75,000/-   | F.No. 14/FD/SEM/278/06-07 dt. 3.4.07  | Rs. 75,000/-   | Project on going |
| 58 | Dr. MA Sivasankaran Professor Civil A/c ( ) Modernisation of strength of materials lab   | 2 years | Rs. 5,00,000/- | F. No. 8023/RId/BOR/MOD-133/06-07 dt. 12.2.07                                       | Rs. 5,00,000/- | Project on going |
| 59 | Development of an automatic grading system for programming courses adopting suitable techniques from software testing measurement & architecture.<br><br>Dr. S. Kanmani CSE ( 53440) | 2 years | Rs. 2,30,000/- | F. No. 8023/BOR/RPS/101/06-07 dt. 26.2.,07  | Rs. 2,26,327   | Project on going |
| 60 | Bioinspired Behaviors in Robotic soccer<br><br>Dr. R. Geetha Ramani CSE Dept. A/c 53441  | 2 years | Rs. 3,80,000/- | F.No. 8023/BOR/RPS/100/06-067 dt. 26.2.07   | Rs. 3,82,217   | Project on going |
| 61 | Investigations on the design of high performing bituminous road pavements<br><br>Dr. VL. Narasimha Professor Civil A/c 53439   | 2 years | Rs. 5,50,000/- | No. 8023/BOR/RPS-367/06-07<br><br>No. 200-62/FIN 04/os/1408/42 dt. 9.4.07           | Rs. 5,50,000/- | Project on going |
| 62 | Chessbot – A chess playing robot<br><br>Dr. N. Selvaganesan Sr. Lecturer EEE A/c 53444   | 1 year  | Rs. 40,000/-   | Go. Rt. No. 32/Enut/07 dt. 22.3.07<br><br>I.D. No. 10/DSTE/RP/So/07/762 dt. 12.3.07 | Rs. 30,000/-   | Project on going |

## Industry Linkage

Industry Institute Partnership (IIP Cell): Objective of this cell is to bring close participation of industries in and around Pondicherry in the following areas through the confederation of Indian Industries(CII) Pondicherry chapter :

- Student placement
- Curriculum development
- In-plant training and industrial visits
- Consultancy activities
- Research and Development activities
- Organization of lectures/seminars in industry and in the College
- Faculty of PEC trained through CII experts
- Organisation of continuing education programmes for personnel in the industry

The college has **signed Memorandum of Understanding (MoU)** with the following agencies:

- **Indira Gandhi Center for Atomic Research ( IGCAR), Kalpakkam**
  - Department of Mechanical Engineering
  - Department of Electronics and Communication Engineering
  - Department of Computer Science Engineering & Information Technology
  - Department of Electrical and Electronics Engineering
  - Department of Electronics and Instrumentation Engineering
  - Department of Civil Engineering
  - Department of Chemical Engineering
  - Department of Physics & Chemistry
- **Auroville International Centre, Pondicherry**
- **M/s Infosys, Bangalore**
  - Campus Connect Programme
  - M/s Azimuth software, Pondicherry

- **Government of Andaman and Nicobar island**
  - Setting up a special wing to start an engineering college with B.Tech programmes in CSE and ECE affiliated to Pondicherry University using resource faculty from Pondicherry Engineering College
- **Department of Information Technology(DIT), New Delhi**
  - DIT has identified Pondicherry Engineering College as one of the premier institute to take up the projects in the area of “Information Security”.
  - ü Dept. of ECE, PEC has received an R&D project entitled “Secure communication using chaotic cryptography” in the year April 2004.
  - ü An International Conference on “Information Security” had been conducted from 7-9, December 2005.
- **Agreement of Cooperation between TCS and PEC “ TCS Academic Interface Programme.**
- **Indo – French Collaboration project in the Area of Satellite based Image processing in ECE Department.**
- **Linking of Institutions of Higher Education under EDUSAT.**

AICTE has selected as one of the institution for providing the Direct Satellite receive Terminals / DRS for all Channels of Gyan Darshen. In this connection Memorandum of Understanding (MoU) with the Department of Space, Government of India participation in ISRO's Indo – US Universities Edusat Network.
- Microsoft
- Pramathi
- IBM Global services

- Central Electro Chemical Research Institute (CECRI), Karaikudi has established data testing centre at PEC for corrosion study
- District Rural Development Agency (DRDA), Govt. of Pondicherry has established a “100 KW” Biomass fuel based power plant at PEC.
- DRDA, Govt. of Pondicherry has erected, commissioned, and tested a “Screw Propeller Wind Mill” in 1996 at PEC.
- “15 KW” solar power plant has been tested in collaboration with National Aeronautical Limited, Bangalore and Dept. of Electricity, Govt. of Pondicherry
- “Pondicherry Engineering College Solar Pond Power Project” (PESPPP) – as a partner?
- VSNL – In collaboration with VSNL, a panel discussion on “Advances in Communication Engineering” is being organized every year starting from 1996.

- Placement status -

**As Given in col. No. IV above.**

- Admission procedure –

#### **BASIC REQUIREMENTS:**

The selection of candidates for all courses will be done in accordance with procedures laid down by the college.

#### **GRADUATE PROGRAMMES:**

##### **1. BACHELOR OF TECHNOLOGY**

Admissions to the B.Tech first year course have been centralized and a Joint Entrance Test (JET) will be conducted by the Centralized Admission Committee (CENTAC), Government of Pondicherry.

## **CRITERION:**

### **Minimum qualification for admission:**

- i) A pass in the H.S.C or any other equivalent examination, with a minimum aggregate of 45% marks.
- ii) Candidates should be above 17 years, but should not have completed 21 years as on 31 December of the year of admission.

### **Pattern of admission:**

Total number of **450** seats

85% - union territory of Pondicherry

15 %(68 seats): - Non Pondicherry UT candidates

63 seats - other states

06 Seats earmarked for MHRD for the beneficiary

states and 5 seats earmarked for External Affairs Ministry

## **2. POST GRADUATE PROGRAMMES:**

### **M.TECH PROGRAMMES:**

#### **Minimum qualification for admission:**

- i) Candidates who possess Bachelor's degree in engineering / technology with at least 55 % marks will be eligible for admission.
- ii) There will be no age restriction. Preference will be given to candidates who are below 45 years.
- iii) Sponsored candidates must have two years of full time work experience.

**Pattern of admission:**

| Sl.no | Allocation of seats                           | 17/18 seats<br>ACT/ECE/ETE/EE | 25 seats<br>(CSE/EEE) |
|-------|---|-------------------------------|-----------------------|
| 1     | U.T. of Pondicherry (general)                 | 5                             | 9                     |
| 2     | U.T. of Pondicherry(other backward class)     | 2                             | 3                     |
| 3     | Other states                                  | 3                             | 4                     |
| 4     | Sponsored candidates from U.T. of Pondicherry | 3                             | 3                     |
| 5     | Sponsored candidates from other states        | 2                             | 2                     |
| 6     | U.T. of Pondicherry (SC/ST)                   | 1/2                           | 3                     |
| 7     | Other states (SC/ST)                          | 1                             | 1                     |

**MASTER OF COMPUTER APPLICATIONS:****MINIMUM QUALIFICATION :**

- i) candidates for admission should have a minimum of 55% marks in Bachelor's degree in computer applications/ commerce/economics/statistics/business administration/computer applications /business mathematics as one of the subjects.
- ii) Candidates should have completed 26 years of age as on 1 July of admission. In case of SC/ST the age limit is relaxable by 3 years.

**ADMISSION PATTERN:**

TOTAL 30 SEATS:

23- UNION TERRITORY OF PONDICHERRY

7 - OTHER STATES.

- Fee Structure -

As given in col No. VIII above.

- **Hostel Facilities**

| Hostel                     | Total Rooms | OCCUPANCY TYPE |        |      | Office | T.V Hall | T.T Room | R.W / Visitors Room |
|----------------------------|-------------|----------------|--------|------|--------|----------|----------|---------------------|
|                            |             | Single         | Triple | Four |        |          |          |                     |
| A Hostel (Varali)          | 146         | 118            | 28     | --   | 1      | 1        | -        | 1                   |
| B Hostel (Saranga)         | 88          | 60             | 28     | -    | -      | 1        | -        | -                   |
| PG Hostel(charukesi)       | 60          | 60             | --     | -    | -      | 1        | 1        | -                   |
| Ladies Hostel (Tharangini) | 65          | 33             | 28     | 4    | -      | 1        | -        | 2                   |

- **Contact address of coordinator of the PG programme**

**Name:** Dr. D. Govindarajulu, Prof, Civil.+  
**Address:** Chairman,  
 CBCS  
 Pondicherry Engineering College  
 Pondicherry – 605 014

**Telephone:** 0413-2655281 Extn: 360, 361

**E-mail:** [d.g@sify.com](mailto:d.g@sify.com)

## LIST OF MAJOR EQUIPMENTS

## DEPARTMENT OF CIVIL ENGINEERING

| SL.NO | LABORATORIES                             |
|-------|--|
| 1.    | Geotechnical Engineering Laboratory      |
| 2.    | Material Testing Laboratory              |
| 3.    | Concrete Laboratory                      |
| 4.    | Transportation Engineering Laboratory    |
| 5.    | Environmental Engineering Laboratory     |
| 6.    | Geology Laboratory                       |
| 7.    | Fluid Mechanics Laboratory               |
| 8.    | Survey Laboratory                        |
| 9.    | CADD Centre                              |
| 10.   | In-situ Test Facility and NDT Laboratory |

| SL.NO | MAJOR EQUIPMENTS   |
|-------|--|
| 1.    | Fully Automatic Double Beam Atomic Absorption spectrophotometer with printer |
| 2.    | UV-Visible Spectrophotometer   |
| 3.    | Electronic Digital Theodolite  |
| 4.    | Digital Planimeter   |
| 5.    | Soil Pressure Meter  |
| 6.    | Corrosion Study Equipment  |
| 7.    | Hydrogen Bubble Flow Visualization Test Rig.                                 |
| 8.    | Non-destructive Test Kits  |
| 9.    | Electronic Distance Measuring Instrument                                     |
| 10.   | 1000kN Electronic UTM  |
| 11.   | 2000kN Electronic Compression Testing Machine                                |
| 12.   | Computerized Fatigue Testing Machine   |
| 13    | Total Station  |

|    |                                  |
|----|----------------------------------|
| 14 | Ball Mill                        |
| 15 | Box Furnace                      |
| 16 | Loading frame of 300 KN capacity |

## DEPARTMENT OF MECHANICAL ENGINEERING

### Details of Laboratories and workshops with Particulars of Major equipment

| S.No | Name of the Laboratory/ workshop                        | Available Floor Area Sq.m | Major Equipment  |
|------|---|---------------------------|--|
| 1    | Basic Workshop  | 600                       | Carpentry, Fitting and Welding   |
| 2    | Machine shop<br>( Mfg.engg.<br>lab I & lab II)          | 600                       | Lathe, Special machines, Foundry and Sheet metal   |
| 3    | CNC lab   | 100                       | CNC Trainer Lathe and milling machine  |
| 4    | CAD lab ( M/c<br>drg,Design Modelling<br>& Simulation ) | 300                       | 25 Systems, 5 printers, 1 plotter, FEM and AUTOCAD softwares, Free educational version softwares |
| 5    | Metallurgy lab  | 200                       | Furnaces and Digital Microscopes   |
| 6    | Metrology lab   | 60                        | Surface roughness measuring device   |
| 7    | Fluid machinery and mechanics lab                       | 600                       | Turbines and pumps   |
| 8    | Thermal engineering lab I and II and Energy Engg lab    | 900                       | Wind tunnel, R & A/c , IC engines, compressors, gas analyzer                                     |
| 9    | Dynamics lab  | 300                       | FFT analyzer, VIB lab, cam and Follower  |
| 10   | Measurements lab  | 200                       | Thermal array recorder, speed measuring device   |

DEPARTMENT OF ELECTRONICS AND COMMUNICATION ENGINEERING

| <b>SL.NO</b> | <b>LABORATORIES</b>                            |
|--------------|--|
| 1.           | Electronic Devices Laboratory                  |
| 2.           | Electronic Circuits Design Laboratory          |
| 3.           | Pulse and Digital Circuit Design Laboratory    |
| 4.           | System Design using IC Laboratory              |
| 5.           | Microprocessor and Applications Laboratory     |
| 6.           | Analog and Digital Communications Laboratory   |
| 7.           | Advanced Communication Laboratory              |
| 8.           | Biomedical Laboratory                          |
| 9.           | Process Control and Instrumentation Laboratory |
| 10.          | Simulation and Design Laboratory               |

| <b>SL.NO</b> | <b>MAJOR EQUIPMENT</b>                       |
|--------------|--|
| 1.           | Image Processing Station                     |
| 2.           | Digital Signal Processing Station            |
| 3.           | Microwave Test Branches (X Band)             |
| 4.           | Mobile Communication Kit                     |
| 5.           | Advanced Biomedical Instruments              |
| 6.           | Digital Transmission and Voice Band Analyzer |
| 7.           | WDM based Fiber Optic Communication Trainers |
| 8.           | Optical Time Domain Reflectometer            |
| 9.           | Acousto-Optic Modulator                      |
| 10.          | Optical Spectrum Analyzer                    |
| 11.          | Digital Transmission Analyzer                |
| 12.          | Computerized Process Control Stations        |

**DEPARTMENT OF COMPUTER SCIENCE & ENGINEERING AND  
INFORMATION TECHNOLOGY**

| SL.NO | LABORATORIES   | MAJOR EQUIPMENTS  |
|-------|--|---|
| 1.    | Srinivasa Ramnujan Computing Centre                                      | Equipped with state of art machines, including a super computer – PARAM with transputers. This center also functions as an internet browsing center with 64 Kbps-leased line from STPI.   |
| 2.    | Systems Laboratory   | Equipped with three Pentium-III servers running on Red Hat Linux 7.0 Windows NT Novell 5.0 and 29 Celeron notes and other accessories.  |
| 3.    | Multimedia Laboratory  | Equipped with 15 units of Pentium 4 @ 2 GHz systems with complete multimedia software and accessories.  |
| 4.    | Research Laboratory  | Equipped with Pentium-III @ 550 MHz based systems with latest software including Image Analyst, GIS etc.  |
| 5.    | MCA Laboratory   | Equipped with a Xeon Server and 30 numbers of P 4 notes @ 2 GHz with all kinds of programming language compilers and application development software tools.  |
| 6.    | CASIT (Centre for Advanced Studies in Information Technology) Laboratory | Equipped with P-III @ 733 MHZ server and 35 numbers of P III notes installed with Windows NT, office suite. Oracle 8i, multimedia authoring tools like Director, Flash etc. The lab is also well equipped with laser printers, scanners and other peripheral devices. |
| 7.    | Wireless LAN Laboratory  | Equipped with two numbers of Intel Pentium III @ 1 GHz servers, 35 numbers of Intel Pentium 4 @ 2 GHZ based nodes with state of art fast, wireless, LAN technology.   |
| 8.    | Thin Client Technology Laboratory  | Equipped with an imported SUN Ultra SPARC III @ 440 MHz based server and 35 numbers of SUN RAY 100  |

|     |                                       |  |
|-----|---------------------------------------|--|
|     |                                       | APPLIANCE with 24-bit graphic nodes installed with latest version of Solaris bundled with C, C++, HPC software, Office Automation Suite, Oracle 8i Development Suite, Java Software and iPlanet Development Suite, etc |
| 9.  | Microprocessor Laboratory             | Equipped with INTEL's 8085 and higher version of microprocessor trainer kits, Hewlett Packard 80 channel logic analyzer, 100 MHz digital storage oscilloscope and PAL/PROM programmers                                 |
| 10. | Hardware troubleshooting & Laboratory | Equipped with PC trainer kits, printer trainer kit, LAN trainer, ABI-4000 board master-special diagnostic computer, IC tester, In-circuit emulators, electronic device and drafting tools                              |
| 11. | Digital Laboratory                    | Equipped with digital trainer kits for studying digital circuits design.   |

### Newly purchased Software

Windows NT, Novell Netware, MS Office, C++, SQL Sever (Bundle Software)  
Image Processing software  
Rational Rose Software

### Equipments

IIP Logic Analyser  
Digital Storage Osilloscope  
ABI 4000 board Master  
Universal In Circuit Emulator LAN Trainer  
7.5 Kva online UPS with Batteries  
P III based server computer 6 Nos  
Multimedia projector  
P III based node computer 5 Nos.  
PARAM computer  
Xeon Server 3 Nos  
10 KVA UPS 2 Nos  
10 KVA UPS

Server (Vesta) 2 Nos  
 CISCO 2610 CH Router  
 SUN F-280 R Server with Blade and Software  
 P-IV 3 GHz 1 MB 80 GB system 56 Nos  
 Windows NT server  
 Intel Wireless LAN server  
 Intel P IV wireless node 35 Nos

## DEPARTMENT OF ELECTRICAL AND ELECTRONICS ENGINEERING

| SL.NO | LABORATORIES                                    |
|-------|---|
| 1.    | Electrical Wiring Laboratory                    |
| 2.    | Electrical Machinery Laboratory                 |
| 3.    | Electronics and Special Machines Laboratory     |
| 4.    | Microprocessor Laboratory                       |
| 5.    | Integrated circuits (Analog/Digital) Laboratory |
| 6.    | Simulation Laboratory                           |
| 7.    | Measurements Laboratory                         |
| 8.    | Electronic Devices and Circuits Laboratory      |
| 9.    | Power Electronics Laboratory                    |

| SL.NO | MAJOR EQUIPMENTS  |
|-------|---|
| 1.    | 4 channel, 0-1000V isolated input Power Oscilloscope        |
| 2.    | 3 phase motor Controller with models of AC/Special Machines |
| 3.    | 4 Quadrant Integral Speed Controller                        |
| 4.    | Inverter/Converter Drives for AC/DC Machines                |
| 5.    | High power 3 phase Automatic Stabiliser                     |
| 6.    | ETAP and Electrical Drafting Tools                          |
| 7.    | PSPICE (A/D with schematics)                                |
| 8.    | Logic Analyzer  |
| 9.    | TMS 320C5 DSP Kit   |
| 10.   | Programmable Logic Controller                               |

**DEPARTMENT OF ELECTRONICS AND INSTRUMENTATION  
ENGINEERING**

| <b>SL.NO</b> | <b>LABORATORIES</b>                     |
|--------------|---|
| 1.           | Simulation Lab                          |
| 2.           | Process Control Lab                     |
| 3.           | Intelligent Instrumentation Lab         |
| 4.           | Electronics Devices and Measurement Lab |
| 5.           | Transducers and Measurements            |

| <b>SL.NO</b> | <b>MAJOR EQUIPMENTS</b>                                    |
|--------------|--|
| 1.           | Latest P-IV configuration PCs 15 Nos.                      |
| 2.           | Multivariable level process trainer, Multi process trainer |
| 3.           | Microprocessor, Microcontroller, DSP Trainer Kits          |
| 4.           | Trainer Kits, Oscilloscopes                                |
| 5.           | Transducer Trainer Kits                                    |

**DEPARTMENT OF CHEMICAL ENGINEERING**

| <b>sl.no</b> | <b>Name of the Course</b> | <b>Name of the laboratory/workshop</b>          | <b>Total area of lab/workshop</b> | <b>Major equipment</b> |
|--------------|---------------------------|---|-----------------------------------|------------------------|
| 1            | B.Tech                    | Heat transfer lab and mass transfer labs(I &II) | 266.22                            |                        |
| 2            | B.Tech                    | Fluid flow operations lab                       | 80.80                             |                        |
| 3            | B.Tech                    | R&D   | 54.16                             |                        |
| 4            | B.Tech                    | Mechanical operations lab                       | 85.15                             |                        |
| 5            | B.Tech                    | Technical analysis lab                          | 69.27                             |                        |

|            |        |                                   |        |  |
|------------|--------|-----------------------------------|--------|--|
| 6          | B.Tech | Chemical reaction engineering lab | 110.16 |  |
| 7          | B.Tech | Balance room                      | 31.83  |  |
| 8          | B.Tech | Process Control lab               | 47.20  |  |
| 9          | B.Tech | Energy technology lab             | 71.53  |  |
| 10         | B.Tech | Instrumental analysis lab         | 36.14  |  |
| Total area |        |                                   | 852.46 |  |

### List of Major Equipment in the laboratories

| Sl. No. | Equipment  |                                      | Purchase |          | Installation Date | Present Condition |             |
|---------|--|--------------------------------------|----------|----------|-------------------|-------------------|-------------|
|         | Name   | Make                                 | Date     | Cost     |                   | Working           | Non-Working |
| 1.      | Top loading electronic balance<br>Capacity 210 gms | ESSAE-TEROKA                         | 21-03-01 | 63999.60 | 21-03-2001        | Working           |             |
| 2.      | Continuous stirred tank reactor                    | Flow & Force Engineers,<br>Bangalore | 30-10-01 | 63000    | 30-10-2001        | Working           |             |
| 3.      | Plug flow reactor                                  |                                      |          | 64900    | 30-10-2001        | Working           |             |
| 4.      | Three CSTRs connected in series                    |                                      |          | 86900    | 30-10-2001        | Working           |             |
| 5.      | PFR and CSTR in series                             |                                      |          | 75900    | 30-10-2001        | Working           |             |
| 6.      | Control valve characteristics                      | Apex                                 | 27-06-01 | 68050    | 27-06-2001        | Working           |             |

|     |  |   |          |          |            |         |  |
|-----|--|---|----------|----------|------------|---------|--|
| 7.  | Closed loop level-flow integrated (cascade) control system | Inno-<br>vations,<br>Pune                           | 07-12-01 | 135939   | 07-12-2001 | Working |  |
| 8.  | DESIGN – II soft ware                                      | Hinditron<br>Infotech,<br>Bombay                    | 14-03-02 | 260000   | 14-03-2002 | Working |  |
| 9.  | Xeon server  | Kalni<br>Tech.,<br>Pdy.                             | 21-06-02 | 169900   | 21-06-2002 | Working |  |
| 10. | P4 nodes   |   |          | 898500   |            | Working |  |
| 11  | Pilot plant membrane separation unit                       | Permionics<br>,Vadodara                             | 20-03-02 | 1,81,500 | 20-03-2002 | Working |  |
| 12  | Non-IBR Boiler   | Firetech<br>Industries,<br>Ble.                     | 12.02.01 | 173880   | 12.02.2001 | Working |  |
| 13  | Cooling tower  | D.K.Scient<br>ific<br>Industries,<br>Ahamedab<br>ad | 29-05-01 | 55600    | 29-05-2001 | Working |  |
| 14. | Heat transfer through packed bed                           |   |          | 53000    |            | Working |  |
| 15. | Double pipe heat exchanger                                 |   | 29-05-01 | 53300    | 29-05-2001 | Working |  |
| 16. | Shell and tube exchanger                                   |   | 29-05-01 | 60900    | 29-05-2001 | Working |  |
| 17. | Rotating disc contactor                                    | Flow &<br>Force<br>Engineers,<br>Bangalore          | 18.07.01 | 65000    | 18.07.2001 | Working |  |
| 18. | Rotary dryer   |   | 18.07.01 | 69000    | 18-07-2001 | Working |  |

## DEAPRTMENT OF PHYSICS

| SL.NO | MAJOR EQUIPMENT  |
|-------|--|
| 1.    | Flaw Detector, Ultrasonic Magnetic Particle Detector, Eddy Current Detector                        |
| 2.    | Strain analysis Equipment with DAS computer Stand-alone System                                     |
| 3.    | Viscometer (milli Pascal to mega Pascal range)   |
| 4.    | Vacuum coating units with Electron Beam Gun  |
| 5.    | Four-probe, two-probe Conductivity Measurement setup   |
| 6.    | Differential Thermal Analyzer  |
| 7.    | Thermo Luminescence Set-up   |
| 8.    | High Power Electro Magnet with imported gauss meters to measure axial and traverse magnetic fields |
| 9.    | Electronic Balance Micro and Milligram Accuracy  |
| 10.   | Bail Mill (planetary type)   |

## DEPARTMENT OF CHEMISTRY

| SL.NO | MAJOR EQUIPMENTS  |
|-------|---|
| 1.    | Precision LCR Meter, Hewlett Packard 4284A-20Hz-1MHz            |
| 2.    | Furnaces and Ovens of various ranges of temperature upto 1400°C |
| 3.    | PC based Double Beam UV-VIS Spectrophotometer                   |
| 4.    | Cryostat (upto 77K)   |
| 5.    | Bomb Calorimeter, digital pH meter, High Vacuum pump            |
| 6.    | Electronic Balances with Micro and Milligram Accuracy           |

# ***PONDICHERY ENGINEERING COLLEGE***

(Established and funded by the Government of Pondicherry)  
PILLAIHAVADY, PONDICHERY – 605 014

## **MANDATORY DISCLOSURE** **( *Engineering & Technology* )**

# ***PONDICHERY ENGINEERING COLLEGE***

(Established and funded by the Government of Pondicherry)  
PILLAIHAVADY, PONDICHERY – 605 014

## **MANDATORY DISCLOSURE** ***M.C.A***

